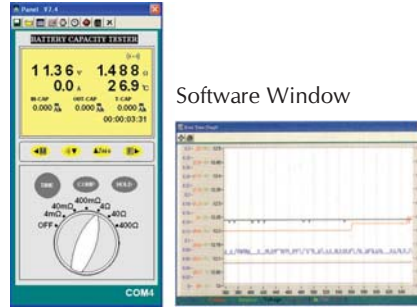




DC Current Adaptor



Software Window

Features

- Right Device to know the TRUE-LIFE of Battery Capacity (Resistance / Voltage / Current & Temperature) Simultaneously
- Measure battery charge / discharge capacity (Ah)
- Measure battery State of Charge SOC (%)
- On-line Testing without shutting down battery
- Built-in Comparator Function
- Rates Conditions as PASS, WARNING or FAIL
- Datalogging Memory Function
- Compact and lightweight
- Optical USB Interface & Software
- Load Test Analysis (Charge / Discharge)
- Auto-Hold & Auto-Data Storage
- Wide Range 0 ~ 1200 Ah
- Auto Power Off
- Memory & Read Function

Specifications

6390

Battery Types Tested	UPS Battery, Motor Cycle (6V/12V : 2 ~ 20Ah), Car (12V : 21 ~ 80Ah), Truck (12V : 83 ~ 160Ah) Household Appliances [(9V : upto 625 mAh), (AA : upto 2850 mAh), (AAA : upto 1250 mAh), (C : upto 8350 mAh), (D : upto 20500 mAh)], Lithium Notebook Battery : [(14.8V : 3600 ~ 4800 mAh), (11.1V : 3600 ~ 7200 mAh)], Lithium Digital Camera Battery : (3.7V : 650 ~ 1350 mAh), Lithium Cordless Phone Battery : (3.7V : 800 ~ 1250 mAh),
Battery Capacity	0 to 1200Ah
Resistance	Ranges : 4mΩ, 40mΩ, 400mΩ, 4Ω, 40Ω, 400Ω Resolution : 1μΩ, 10μΩ, 100μΩ, 1mΩ, 10mΩ, 100mΩ Accuracy : ± (0.8% reading + 6 digits) on all ranges. except ± (3% reading + 20 digits) on 4mΩ
Measurement Condition	Current : Approx. 40mA, 4mA, 400μA, 40μA, 4μA Frequency : 1KHz ± 30Hz
DC Voltage	Range : 6V, 60V; Resolution : 1mV, 10mV; Accuracy : ±(0.1% reading + 6 digits)
Temperature	Range : -20°C to 60°C (-4°F to 140°F); Resolution : 0.1°C / 0.1°F; Accuracy : ± 1°C / ± 1.8°F
DC Current	Range : 4A; Resolution : 1mA; Accuracy : ± (2%rdg + 2dgt), Range : 30A; Resolution : 10mA; Accuracy : ± (2%rdg + 3dgt), Range : 600A; Resolution : 0.1A; Accuracy : ± (2%rdg + 2dgt)
Open Circuit Voltage	5V max
Datalogging	999 Data Sets of Manual & Auto Data Memory / 6000 Data Sets (only use PC Download)
Comparator	Setting : Resistance Upper and Lower Limits and Voltage Upper and Lower Limit Memory : 99 Sets of Values
Operating Environment	0°C to 40°C (32°F to 104°F), 80% RH or less, Non-condensing
Power Supply	Six 1.5V AA size Alkaline Batteries
Battery life	5.5 Hours
Dimensions / Weight	198 x 94 x 49 mm (approx.) / 505gms Including Battery (approx.)
Accessories	Alligator Clip Type Test Lead with Temperature Sensor x1, Pin Type Test Lead x 1, DC Current Adaptor x 1, Zero Adjustment Board x 1, Instruction Manual x 1, Batteries (installed), AC Adaptor x 1, Optical USB Cable x 1, PC Software Disk x 1, Carrying Bag x 1, Optional : Thermal Printer x 1

Resistance Measurement

Range	Resolution	Measurement Current	Accuracy
4mΩ	1mΩ	40mA approx.	± (3% reading ± 20 digits)
40mΩ	10mΩ	40mA approx.	
400mΩ	100mΩ	4mA approx.	± (0.8% reading ± 6 digits)
4Ω	1mΩ	400μA approx.	
40Ω	10mΩ	40μA approx.	
400Ω	100mΩ	4μA approx.	

Measuring Current Frequency : 1KHz ± 30Hz

Voltage Measurement

Range	Resolution	Accuracy
6V	1mV	± (0.1% reading ± 6 digits)
60V	10mV	

Maximum Input Voltage : 60VDC maximum. No AC Voltage Input.

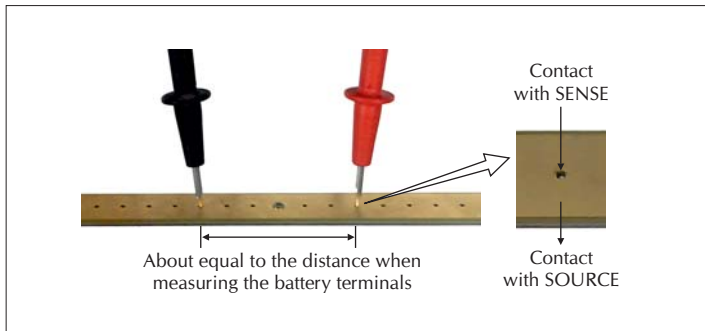
Temperature Measurement

Range	Resolution	Accuracy
-20°C to 60°C	0.1°C	± 1.0°C
-4°F to 140°F	0.1°F	± 1.8°F

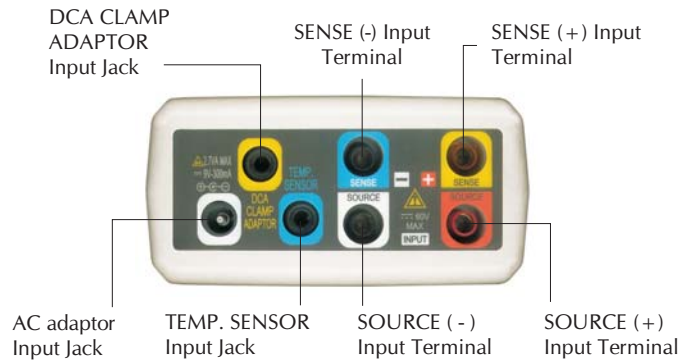
DC Current Measurement

Range	Sensitivity	Resolution	Accuracy
4A	6mA ~ 4A	1mA	± (2.0%rdg ± 2dgts)
30A	60mA ~ 30A	10mA	± (2.0%rdg ± 3dgts)
600A	0.6A ~ 600.0A	0.1A	± (2.0% rdg ± 2 dgts)

Zero Adjustment Using Pin Type Test Lead



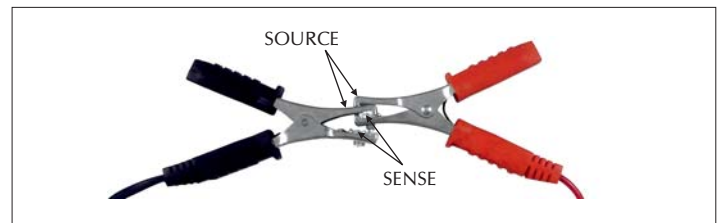
Input Terminals



Usage



Zero Adjustment Using Clip Type Test Lead



Product Kit

